



















# *The car that built America.*

*Chevrolet set the standard American cars are now famous for:*

*roominess, comfort, reliability, adaptability and safety. By 1940,*

*25 million Chevrolets had been*

*made and sold to managers*

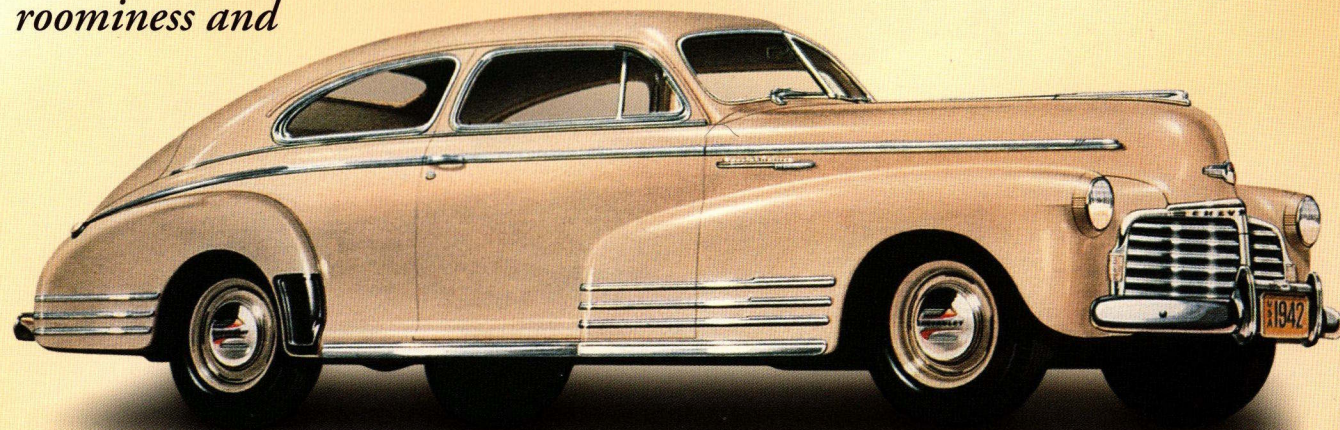
*in New York. Housewives in*

*Houston. Farmers in Iowa.*

*Oilmen in Texas. Politicians in*



*Washington. Anyone and everyone who wanted comfort, style and reliability. Chevrolet has always been a pioneer in accident engineering and interior protection: ABS, air bags, side-impact protection and more all come as standard. But it also stands for convenience, easy maintenance, roominess and*



*Eco-friendly economy. In*

*other words – everything*

*you'd expect from Chevrolet.*

*They say Chevrolet is*

*as American as Baseball, Hot Dogs and Apple-Pie.*

*But it's more than that. It is comfortable, reliable*

*and dependable, too!*











**Looks American. Handles European.**

In the Chevrolet Alero, you'll really get the best of both worlds: American styling, safety, power and comfort, and the handling and responsiveness that is expected by Europeans. That's why we gave the Alero an all-independent

front suspension which helps keep all four wheels firmly planted on the ground, so you can experience Alero's nimble, responsive handling.

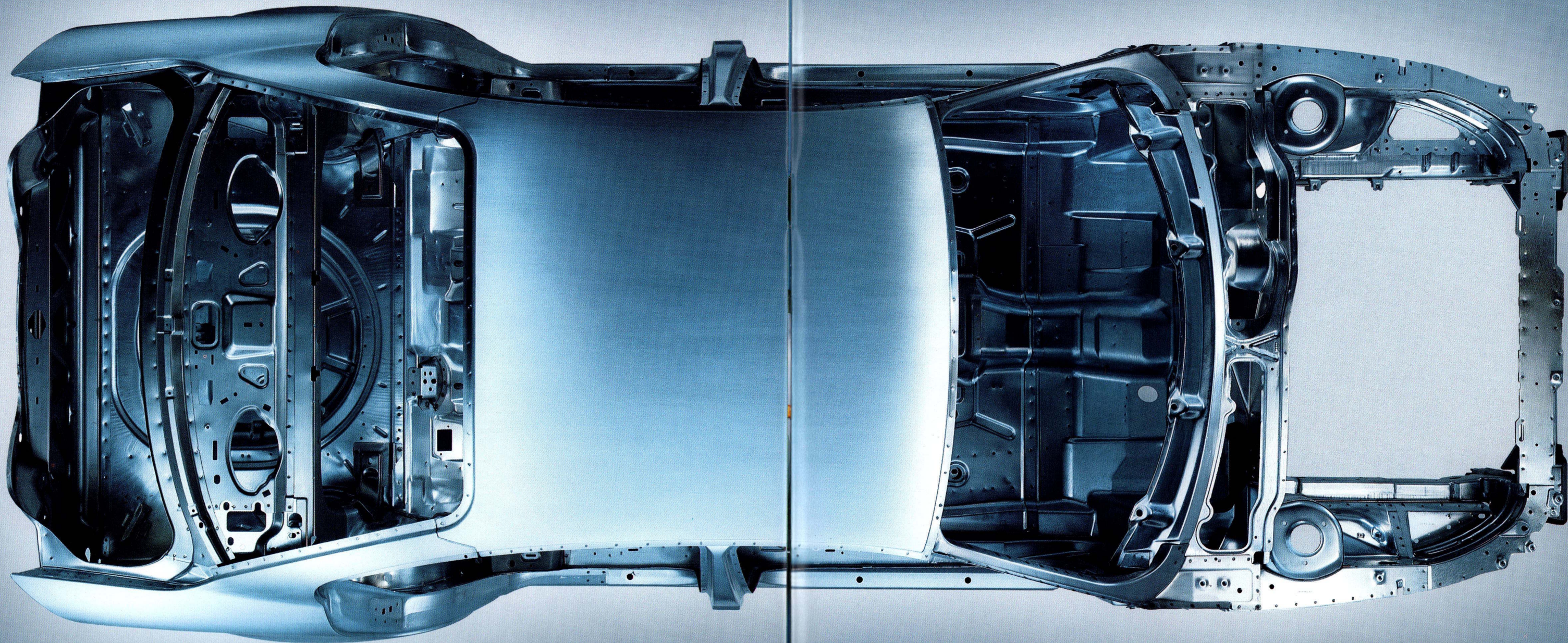
To further enhance confidence and enjoyment while driving, we've added wide low-profile

tires that really grip the road. Standard traction control and 4-wheel disc brakes with ABS provide impressive directional stability during acceleration and braking.

It all adds up to refined handling that lets you have the control in any driving situation.







**Welcome to the safety zone.** Alero's rigid structure is a galvanized steel bodyguard to help protect the occupants in a collision. But that's just the first line of a 'defense system' that goes much deeper. It includes front and rear crush zones, side-door beams, foam energy

absorbers in the doors, high-strength steel pillars, 3-point safety belts and driver and front passenger air bags. Automatic power door locks, rear-door child-security locks, battery run-down protection, PASSLock theft-deterrent system and even a tire inflation monitor are also standard.

So even when you are not on the road, Alero is helping to keep you and your family secure.







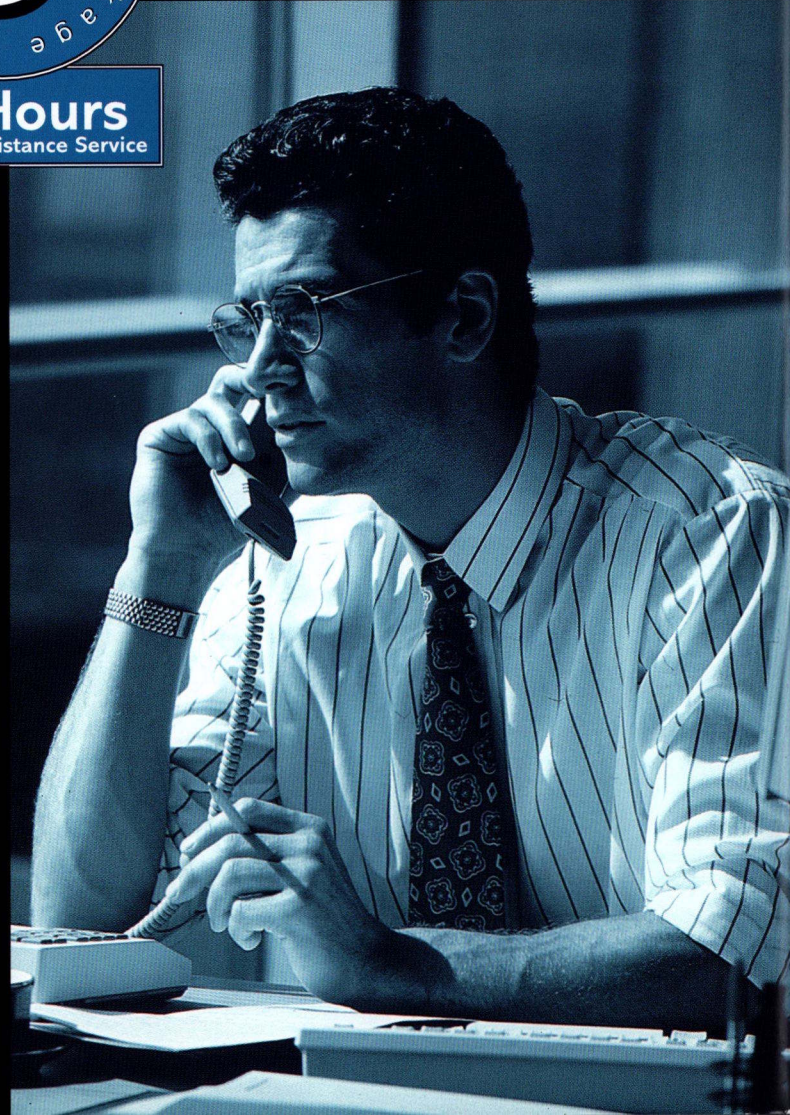
**We guarantee quality.** Alero benefits directly from the vast resources of General Motors and its commitment to every aspect of both passenger and vehicle safety. It is a vehicle of undisputed quality, with all the equipment you want and with a comprehensive range of proven comfort and safety features which combine to create a vehicle that represents very real value for money. The standards of build quality, technology and equipment are such that every Alero has a 3-year or 100,000-km guarantee. Plus a 6-year anti-corrosion guarantee.



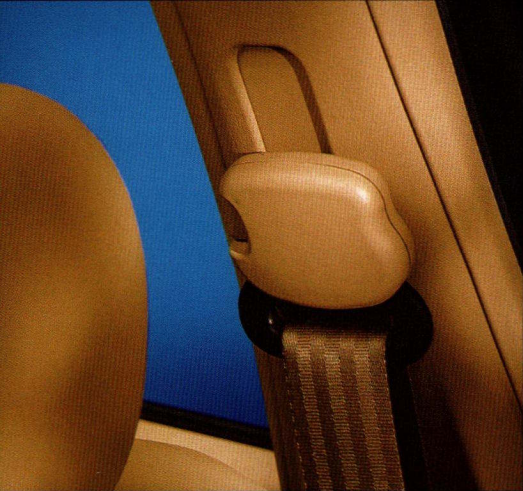
**24 Hours**  
Roadside Assistance Service

**We are always supportive.** We give you the reassurance of our 24-hour, 365-days-a-year Roadside Assistance, which operates with service points throughout Europe. We believe that if you buy an Alero, the very least you should expect is 100% commitment. Every Chevrolet Retailer throughout Europe wants to give you the opportunity to experience for yourself the pleasure and excitement of driving an Alero. Just give us a call.

We reserve the right to make changes at any time and without prior warning regarding color, fittings, specifications and models. Technical specifications are provided by the manufacturer. Further information can be obtained from your Chevrolet Retailer.







*Comfortable, height-adjustable front shoulder belts.*



*Front-door storage pockets keep essentials for the road handy.*



*The Alero is also available with a dynamic rear spoiler.*



*The voluminous trunk holds plenty of gear.*







 **CHEVROLET**

*For further information, please contact your Chevrolet Retailer or visit our website <http://www.chevrolet.com>*



## Technical Specifications

### Chassis/Suspension

Front suspension	Independent strut with coil springs, gas charged shock absorbers
Rear suspension	Independent strut with coil springs, gas charged shock absorbers
Steering type	Power variable rack and pinion
Wheels	15" x 6" Aluminum
Tires	P215/60R 15
Braking system, front/rear	Power-assisted 4-wheel disc brakes, ABS
Traction control system	Enhanced traction system, all speed

### Alero Standard Equipment

Driver & Front Passenger Airbags • Anti-Lock Brake System (ABS) • Side Impact Protection Beams • Brake/Transmission Shift Interlock • Air Conditioning • Tire Pressure Monitor • Enhanced Traction System • Child-Proof Rear Door Locks • AM/FM Stereo Radio/CD/Cassette Player and 6-Speaker System • Cargo Net • Cruise Control • Floor Console with Armrest and Storage • Covered Visor, Vanity Mirrors with Map Straps, Three-Position Dome Lamp with Dual Reading Lamps, Mirror-Mounted Map Lights • Tilt Steering Wheel • Power Windows • 2-Way Manual Seat Adjuster, Passenger Side • Front Bucket Seats with Driver-Side Manual Lumbar Support • Split Folding Rear Seat, 70/30 • Engine Oil Life Indicator • Pass Key, Theft Deterrent System • Battery Guard • Standard Equipment, Exterior: Solar Ray™ Tinted Windows • Remote Keyless Entry, Power Door Locks • Power Exterior Rearview Mirrors in Black • 15" Aluminum Wheels • Auxiliary Power Outlet • Power Steering • Rear and Front Fog Lamps • Headlamp Controlled Leveling System • Illuminated Entry with Theater Dimming and Illuminated Interior with Ignition Key Removal

### Alero 1SA Package / Automatic

2.4I DOHC SFI 4-Speed Automatic Transmission with overdrive • 4-Way Manually Adjusted Driver's Seat with Power Height Adjustment • Engine Oil Cooling System • Cloth Trim

### Alero 1SA Package / Manual

2.4I DOHC SFI 5-Speed Manual Transmission\*\* • 4-Way Manually Adjusted Driver's Seat with Power Height Adjustment • Engine Oil Cooling System • Cloth Trim

### Alero 1SB Package / Automatic

2.4I DOHC SFI 4-Speed Automatic Transmission with overdrive • 6-Way Driver-Side Power Seat Adjuster • Engine Oil Cooling System • Leather-Wrapped Steering Wheel and Shifter • Leather Trim\*

### Alero 1SB Package / Manual

2.4I DOHC SFI 5-Speed Manual Transmission\*\* • 6-Way Driver-Side Power Seat Adjuster • Engine Oil Cooling System • Leather-Wrapped Steering Wheel and Shifter • Leather Trim\*

### Alero 1SC Package / Automatic

3.4I SFI V6 4-Speed Automatic Transmission with overdrive • 4-Way Manually Adjusted Driver's Seat with Power Height Adjustment • Cloth Trim

### Alero 1SD Package / Automatic

3.4I SFI V6 4-Speed Automatic Transmission with overdrive • 6-Way Driver-Side Power Seat Adjuster • Leather-Wrapped Steering Wheel and Shifter • Leather Trim\*

\* Leather Seating Surfaces

\*\* approx. available from January 2000

### Optional Equipment

	1SA Cloth	1SB Leather	1SC Cloth	1SD Leather
6-Way Driver-Side Power Seat Adjuster	○	●	○	●
Rear Aero Wing Spoiler	—	—	○	○
Sliding Power Sunroof, Center Dome Lamp, Integral Rear Reading Lamps, Sliding Visor, Covered Vanity Mirrors, Map Straps, Coat Hooks	○	○	○	○

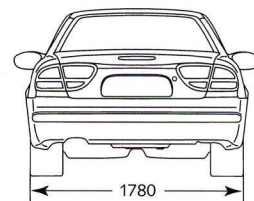
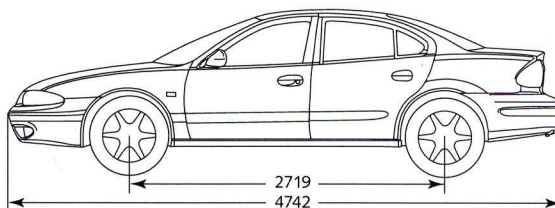
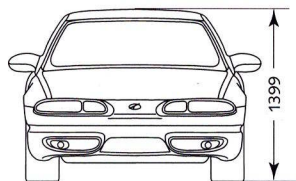
● Standard / ○ Available / — Not available



Every Chevrolet purchased from an authorized Retailer comes with General Motors Warranty protection for the first three years or 100,000 km from the date of initial registration. All metal panels are guaranteed against rust through perforation for 72 months, regardless of the number of miles driven. The General Motors Customer Protection System gives you around-the-clock Roadside Assistance 7 days a week, 365 days a year throughout Europe.



## Technical Specifications



### Dimensions and Capacities

	2.4l – LD9 – 3NL69	3.4l – LA1 – 3NL69
Length (mm)	4742	4742
Width (mm)	1780	1780
Height (mm)	1399	1399
Wheelbase (mm)	2719	2719
Track width, front/rear (mm)	1498/1502	1498/1502
Min. ground clearance (mm)	127	127
Overhang, front/rear (mm)	1016/1007	1016/1007
Luggage capacity (l)	433	433
Turning diameter, curb-to-curb (m)	10.9	10.9
Head room, front/rear (mm)	975/940	975/940
Leg room, front/rear (mm)	1072/902	1072/902
Shoulder room, front/rear (mm)	1361/1336	1361/1336
Hip room, front/rear (mm)	1293/1308	1293/1308
Curb weight (kg)	1480	1483
Max. allowable weight (kg)	1852	1855
Fuel tank (l)	54	54

### Engine and Transmission

Engine	4 Cyl. in line, 2.4l 16V, LD9	6 Cyl. in 60°, OHV, 3.4l V6, LA1
Engine block	Cast Iron	Cast Iron
Engine heads	Aluminum	Aluminum
Bore x stroke (mm)	90 x 94	92 x 84
Displacement (cm³)	2392	3350
Number of valves	4 per cylinder	2 per cylinder
Compression ratio	9.7:1	9.5:1
Fuel system	Sequential port fuel injection	Sequential port fuel injection
Fuel type	Unleaded RON 91	Unleaded RON 91
Cooling system	Liquid dexcool/ethylene glycol	Liquid dexcool/ethylene glycol
Cooling capacity (l)	10.0	11.8
Engine oil capacity (l)	3.8	3.8
Emission control system	3-way catalytic converter 2 elements oxygen sensor, unheated	3-way catalytic converter 2 elements oxygen sensor, heated
Performance (kW/hp/rpm)	104/141/5800	130/177/5200
Max. torque (Nm/rpm)	199/4200	271/4000
Drive system	Transverse-mounted front engine, front wheel drive	Transverse-mounted front engine, front wheel drive
Transmission	4-speed electronic controlled automatic with overdrive 5-speed manual with synchronized reverse gear**	4-speed electronic controlled automatic with overdrive
Axle ratio (auto./man.)	3.42:1/3.05:1	3.96:1
Gear ratios: 1st/2nd/3rd/4th (auto.)	2.96/1.62/1.00/0.68	2.96/1.62/1.00/0.68
Gear ratio: reverse (auto.)	2.14:1	2.14:1
Gear ratios: 1st/2nd/3rd/4th/5th (man.)	3.58/2.02/1.35/0.98/0.69	
Gear ratio: reverse (man.)	3.31:1	
Top speed (km/h)	201	201
Acceleration 0–100 km/h (sec.)	10.6	9.2
Fuel consumption EEC 93/116 (l/100 km city/highway/mixed)		
– 4-speed automatic transmission	13.8/7.2/9.6	15.2/8.6/11.0
– 5-speed manual transmission	13.0/8.4/10.1	
CO <sub>2</sub> emission (g/km) (auto./man.)	229/240	262